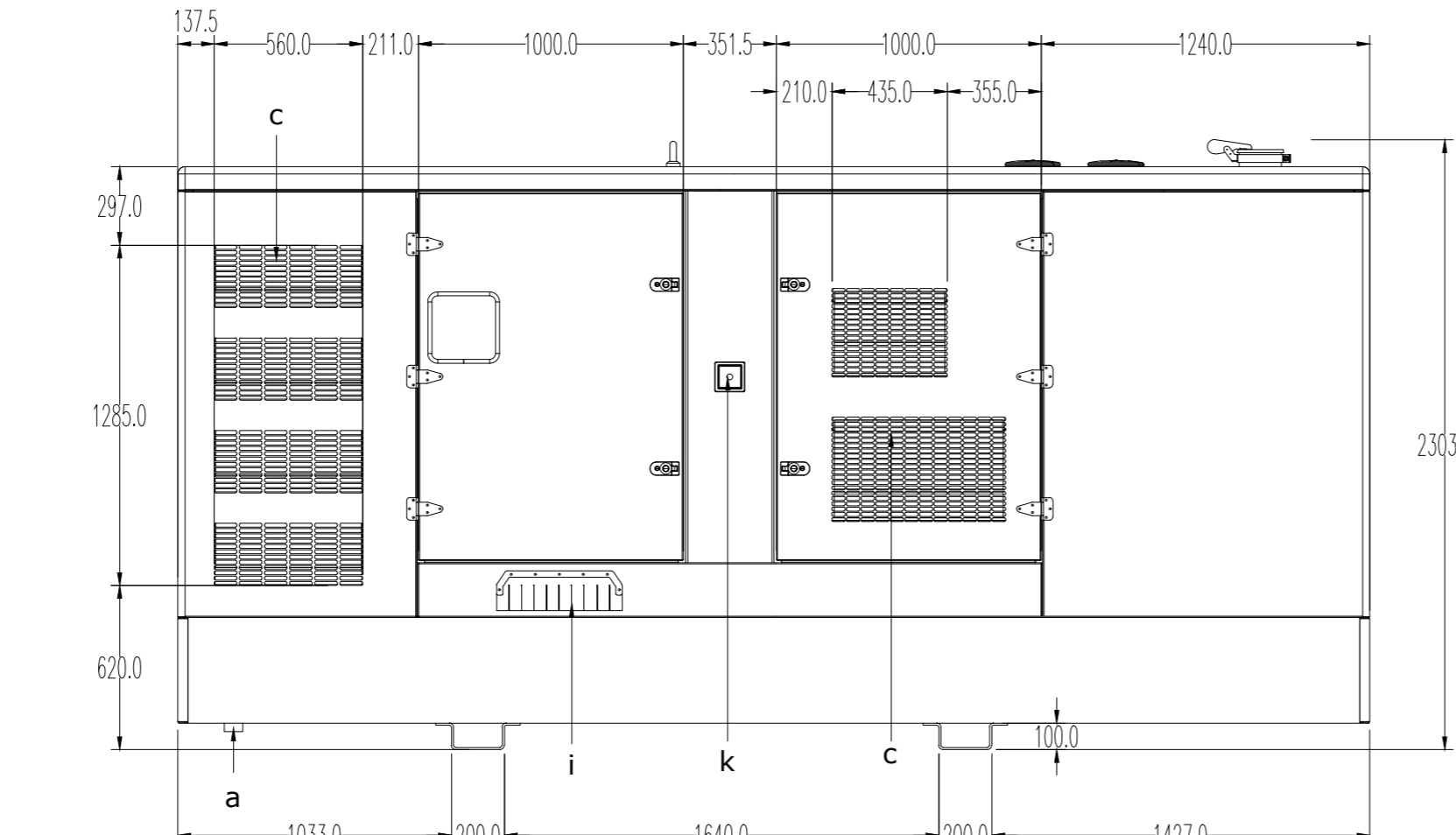
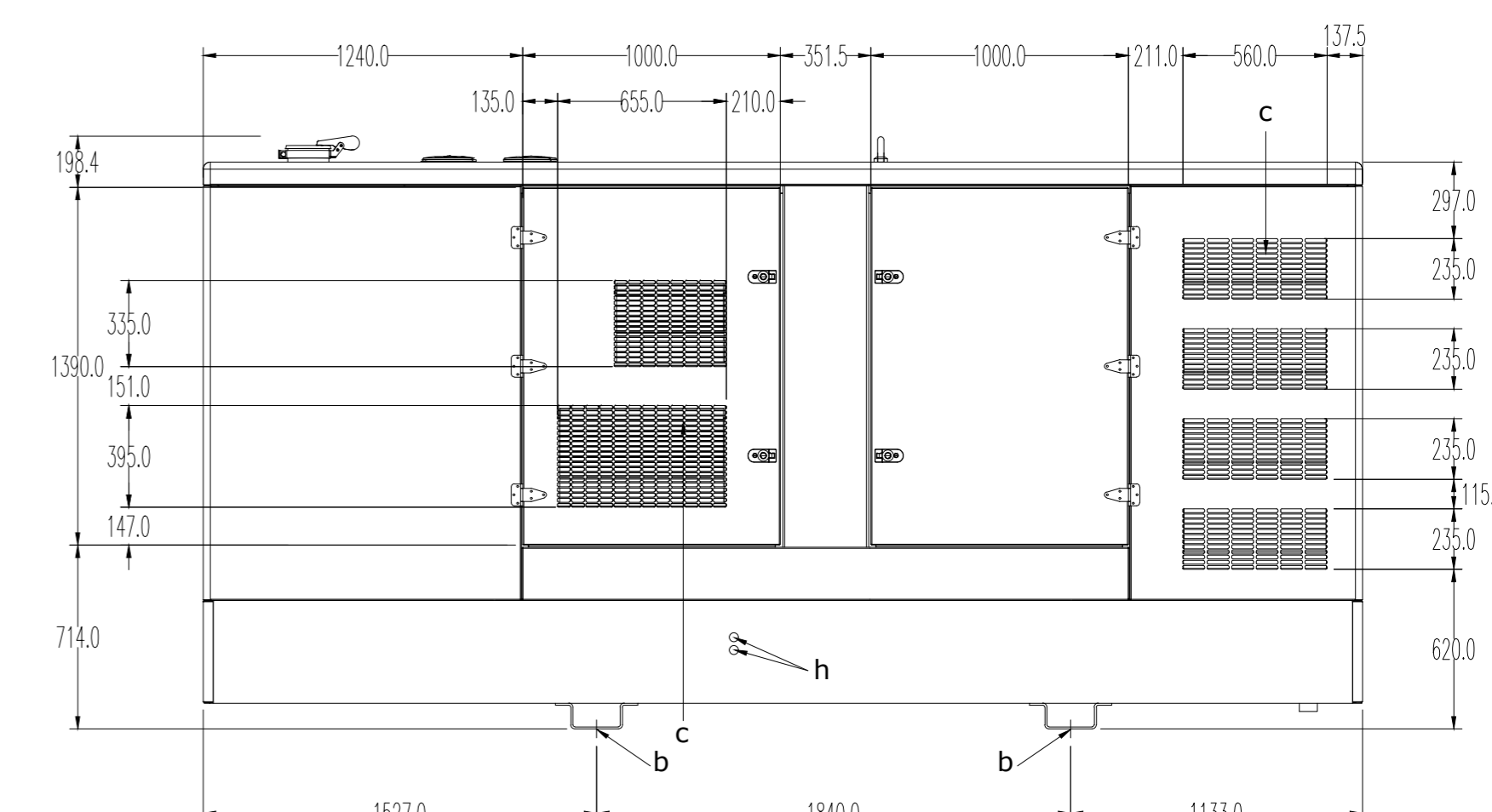


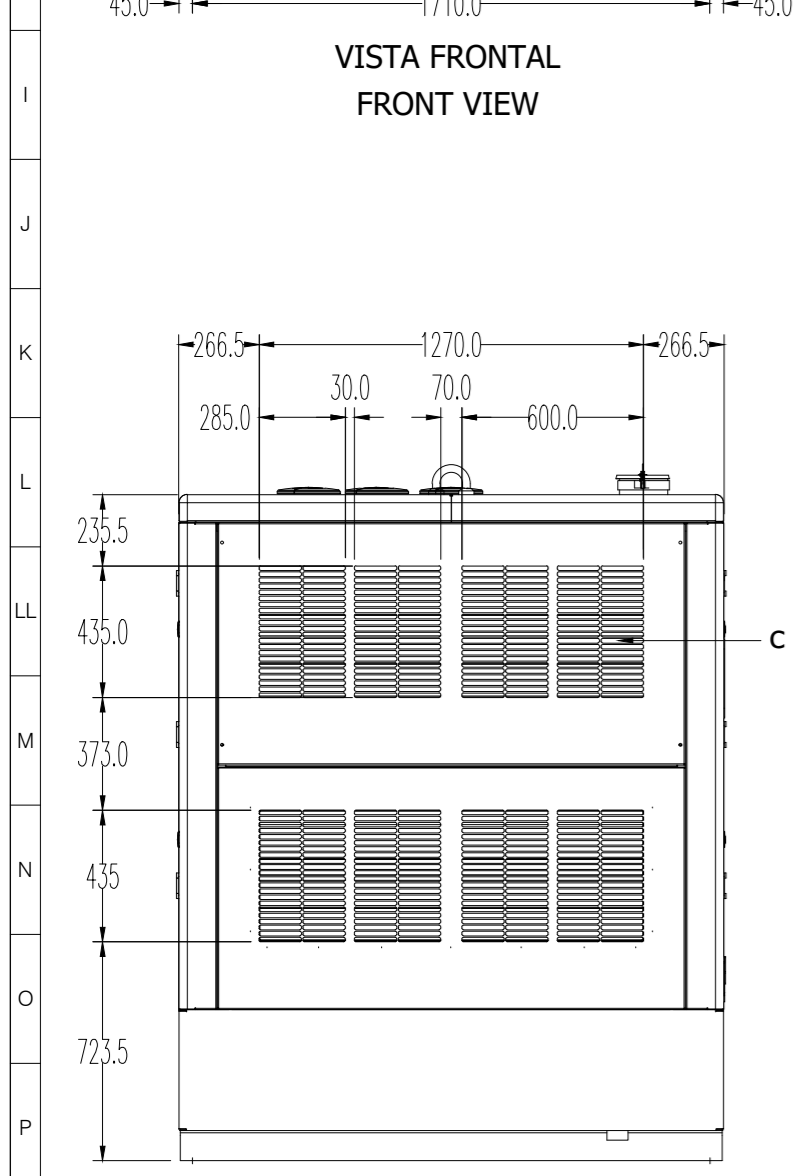
VISTA FRONTAL
FRONT VIEW



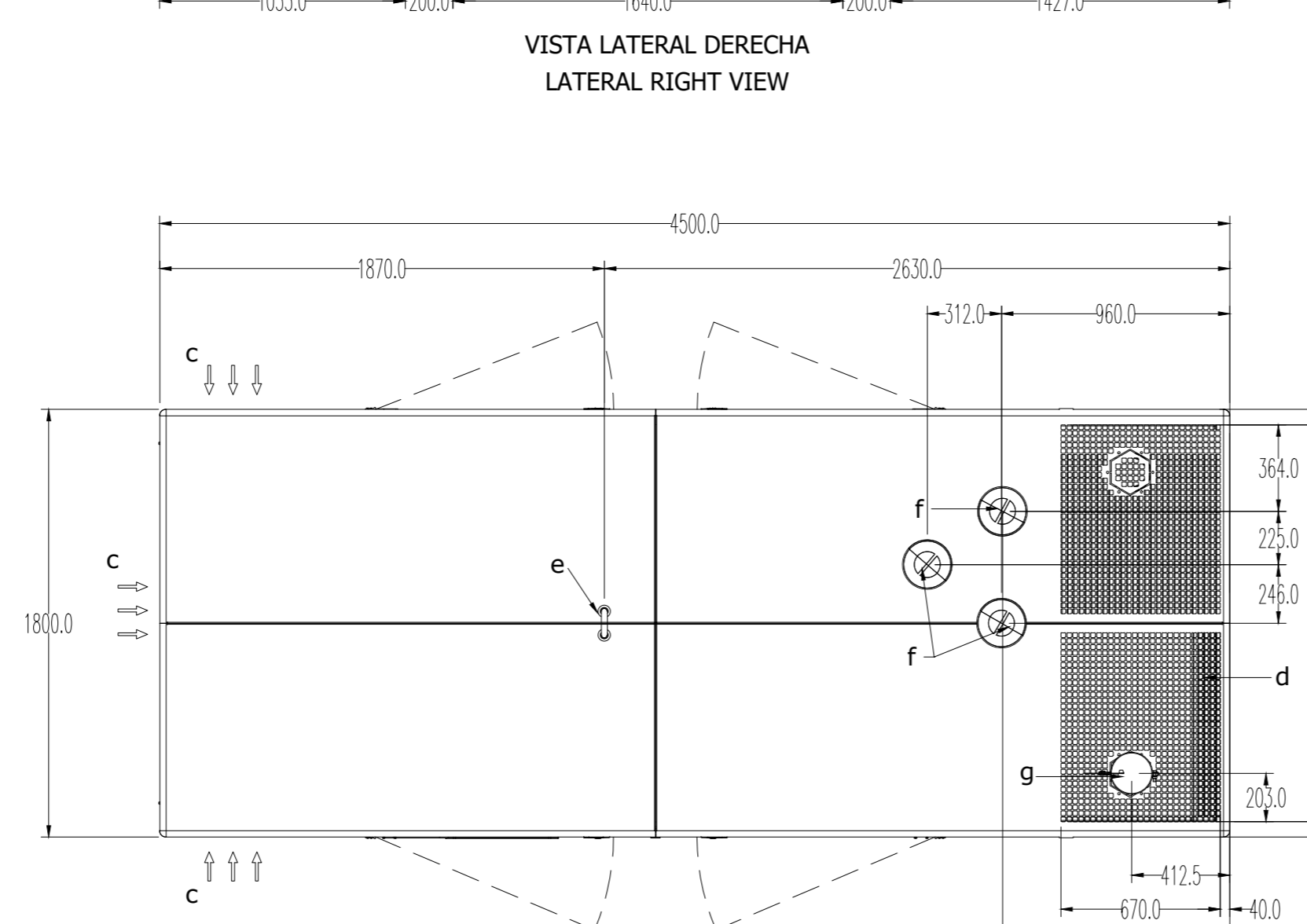
VISTA LATERAL DERECHA
LATERAL RIGHT VIEW



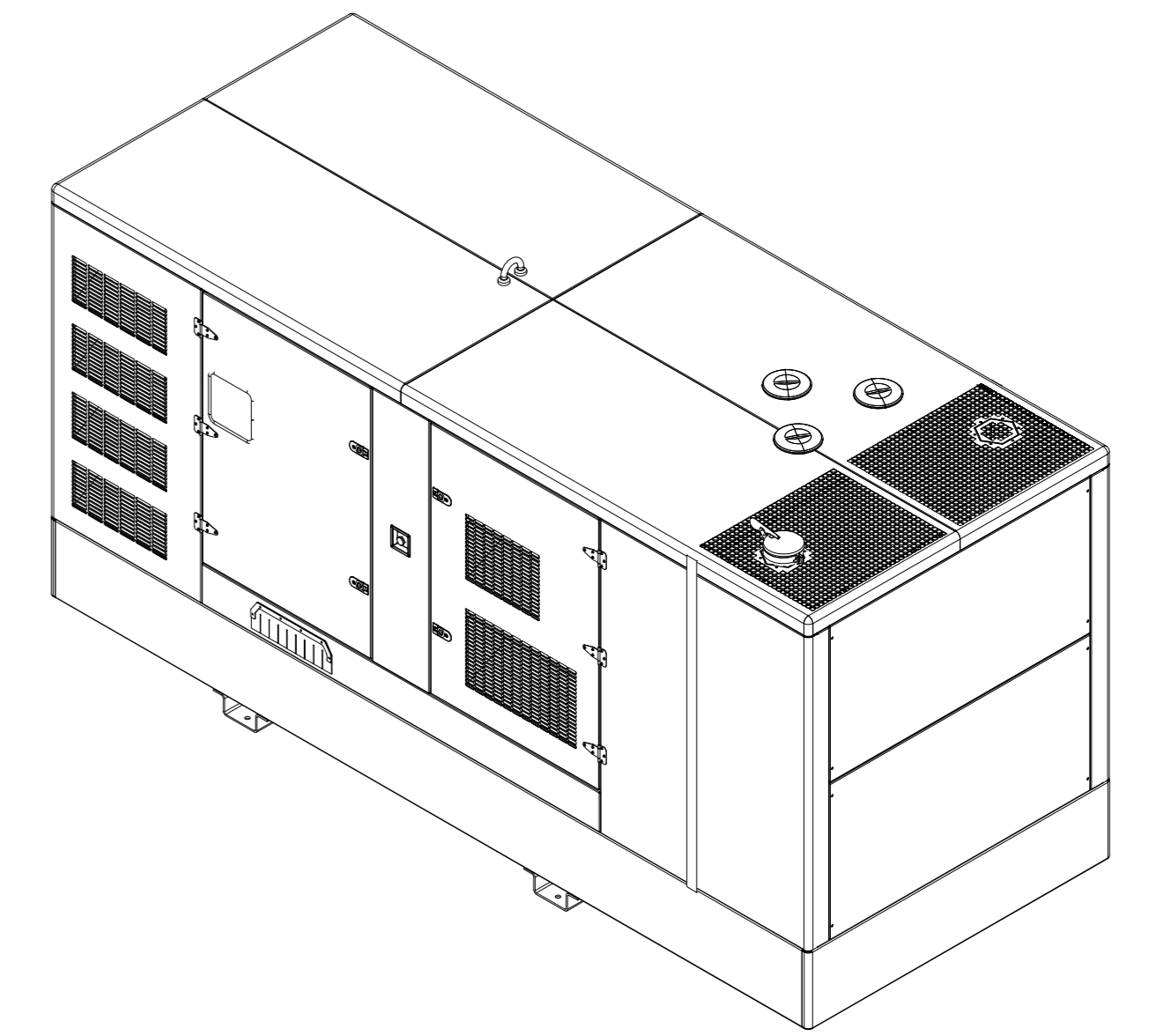
VISTA LATERAL IZQUIERDA
LATERAL LEFT VIEW



VISTA POSTERIOR
REAR VIEW



VISTA SUPERIOR
TOP VIEW



VISTA ISOMÉTRICA
ISOMETRIC VIEW

NOTAS	NOTES
a TAPÓN DRENAJE	ACCESS TO DRAIN
b FIJACIÓN GRUPO (4 x Ø16 mm)	MOUNTING POINT (4 x Ø16 mm)
c ENTRADA AIRE	AIR INLET
d SALIDA DE AIRE	AIR OUTLET
e GANCHO IZADO (Es posible que no coincida con el centro de gravedad)	LIFTING POINT (Is not above the center of gravity)
f ACCESO RADIADOR	RADIATOR ACCESS
g SALIDA DE ESCAPE 160 mm	EXHAUST OUTPUT 160 mm
h PASAMUROS	FOR EXTERNAL FUEL SUPPLY CONNECTIONS Ø42 mm
i SALIDA DE POTENCIA	POWER OUTLET
k PARADA DE EMERGENCIA	EMERGENCY STOP

CAPACIDAD DEL DEPOSITO / TANK CAPACITY : 740 LITRES

Motor/Engine	Modelo Motor / Engine model
FPT	CR16 TE1W
YANMAR	6F141TE1W.GL

Designed:	12/07/17	Name:	J.O.
Revised:	23/09/20	Name:	J.O.
Approved:	23/09/20	Name:	A.P.

Information and data contained in this document is non-binding in nature and is made available exclusively for informational purposes. Any implicit warranty regarding merchantable conditions or suitability for certain purposes is excluded. Only updated information contained or referred-to in a Purchase Order duly confirmed by writing by HIMOINSA shall be considered legally binding.

Designación / Designation: GRUPO ELECTROGENO INSONORIZADO / SOUNDPROOF GENSET MOTOR / ENGINE: FPT, YANMAR CARROCERIA MODELO / CANOPY MODELL: H1	Status: RELEASED
Code: GI-00355-H1	
Revision: 01 Din-A2	
Unit: mm Scale: 1/25	